



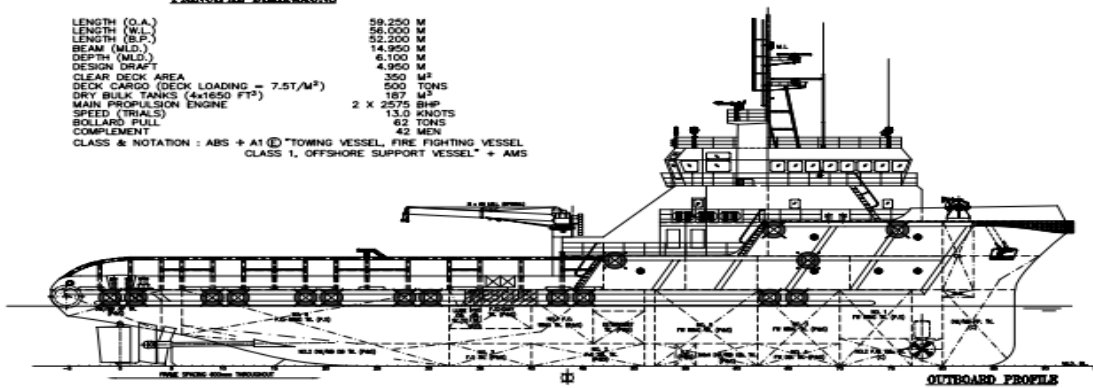
AHTS - STRATIS Z

Vessel Specifications

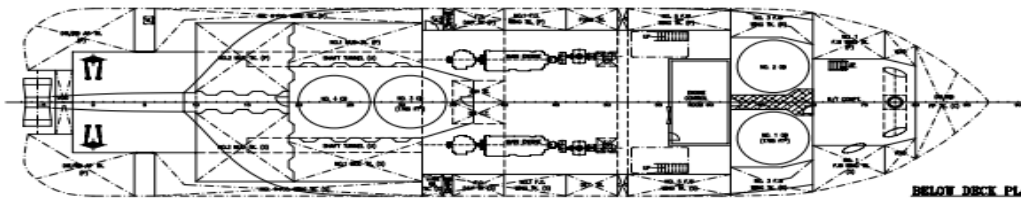


PRINCIPAL DIMENSIONS

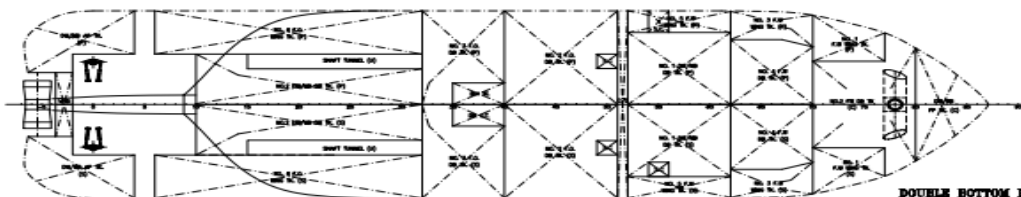
LENGTH (O.A.)	59.250 M
LENGTH (N.L.)	56.000 M
LENGTH (B.P.)	52.200 M
BEAM (M.L.D.)	14.950 M
DEPTH (M.L.D.)	6.100 M
DESIGN DRAFT	4.950 M
CLEAR DECK AREA	350 M ²
DECK CARGO (DECK LOADING = 7.5T/M ²)	500 TONS
DRY BULK TANKS (4x1650 FT ³)	187 M ³
MAIN PROPULSION ENGINE	2 X 2575 BHP
SPEED (TRIALS)	13.0 KNOTS
BOLLARD PULL	62 TONS
COMPLEMENT	42 MEN
CLASS & NOTATION : ABS + A1 @ "TOWING VESSEL, FIRE FIGHTING VESSEL CLASS 1, OFFSHORE SUPPORT VESSEL" + AMS	



OUTBOARD PROFILE



BELOW DECK PLAN



DOUBLE BOTTOM PLAN

GENERAL

Vessel Name	STRATIS Z
Year Built	2007
Builder	Fujian Southeast Shipbuilding - China
Classification	LR
Class Notation	LR, +100 A1, AHTS, Towing Vessel, Fire Fighting Ship 1, +LMC
Design	KCM 59M AHTS
Official No.	49151-17
Call Sign	3FIO4
IMO Number	9425576
Flag	Panama
Port of Registry	Panama City

MACHINERY

Main Engines	2 X MAK, Total 5150 BHP/3840 kW
Propellers	2 BERG CPP in Kort Nozzles. D:2650mm
Rudders	2 x Ulstein High Lift Flap type
Bow Thruster	1 x 315 kW tunnel, electrically driven CPP
Aux. Generators	3 x 315 kVA @ 1500 rpm, 3x 415V 50 Hz
Emergency Generators	1 x 52 kVA @ 1500 rpm, 1x 415V 50 Hz

CAPACITIES & PUMP RATES

Cargo Deck Area	340 m ² (28x12m)
Deck Cargo	5.0 t/m ² , 800 tons @ 0.9 m above deck
Fuel Oil	537 m ³ – 1x150 m ³ /h at 75m
Fresh Water	360 m ³ – 1x 100 m ³ /h at 75m
Drill/Ballast Water	400 m ³ – 1x100 m ³ /h at 75m
Liquid Mud/Brine	370 m ³ – 1x 75 m ³ /h at 75m

Liquid mud tank are designed for products up to 2.5 sg

and are equipped with agitators and circulation

Bulk Cement	187 m ³ , 4 tanks, SG 1.35
	2 air compressors– 2x13m ³ /min at 5.6 bars
Dispersant	14 m ³
Foam	14 m ³

ACCOMMODATION

Accommodation for 42 persons composed of fully air-con:

4x single cabins, 3x 2 men cabins, 8x 4 men cabins

1 office, 1 hospital, 2 mess/day rooms, laundry, galley

provision rooms, stores

DIMENSIONS

Length Overall	59.25 m
Breadth, moulded	14.95 m
Depth, moulded	6.10 m
Draft, designed	4.95 m
GT/NT	1678/503
DWT at max draft	1385 Tons
Bollard Pull	65 TBP

CONSUMPTIONS

At 100% MCR	11 m ³ /day @ 12 kts
At 85% MCR	10 m ³ /day @ 10 kts
At Economic Speed	8 m ³ /day @ 9 kts
Type of Fuel	MGO

ANCHOR HANDLING / TOWING

Main Winch	1 Karmoy hydraulic low pressure winch composed of 2 declutchable drums in waterfall arrangement each equipped with:
Drum Size	Dia. 900/2,090 mm x 1,800 mm length.
Drum Capacity	1,000 m of 52mm steel wire rope
Brake holding load	200 t on 1 st layer
Rated Pull	150 t on 1st layer at 0-8.4 m/min
Spooling device	Combined for both drums
Storage Wire Reel	1 hydraulic unit with 1 drum Pull @ 1st layer: 12 t at 0-18 m/min Capacity: 1000 m of 52mm wire

Shark Jaw	2 Sets of 200 SWL tns each.
Towing Pins	1 pair of vertical/retractable type, 200 t SWL
Stern Roller	1 X 200 mt SWL, L: 4000 mm D: 1600 mm
Tugger Winches	2x 10 t at 25m/min
Capstans	2x 10 t at 14m/min
Deck Crane	3 t at 9 m

ELECTRONICS

NAVIGATION

2 radars, 1 gyrocompass, 1 magnetic compass, 1 digital echo-sounder, 1 speed log, 1 GPS

1 autopilot system, ECDIS 4000

COMMUNICATION

1 radio system compliant with GMDSS A3 rules including:

1 SSB duplex DSC, 2 INMARSAT C, 2 VHF, EPIRB, SART, NAVTEX, 1 Iridium system, 1 INMARSAT F

E-mail and on-board computer network system, Intercom system with facilities in each room

SPECIAL EQUIPMENT

FIFI Class 1

Water Monitors: 2 x 1,200 m³/h at 12 bars (with foam capacity 300m³/h)

Pumps: 2 x 1,400 m³/h at 14 bars each with deluge system

Water Maker: 1 x 3t/day

www.zouros.gr

42, 26th OCTOVIROU STR., 546 27 THESSALONIKI, GREECE | TEL: +30 2310 555500 FAX: +30 2310 555506 |
e-mail: contact@zouros.gr

